



The part-time IDBE masters programme is a unique collaboration between the University's Departments of Architecture and Engineering. It is tailored to professionals in the built environment looking for ways to revolutionise the way they work in the face of today's global challenges. Concepts of sustainability, leadership, strategy and interdisciplinarity are interwoven through the course, which delivers lectures, workshops and research from some of the foremost thought-leaders in industry and academia. Applications are now open for September 2014.

Key features:

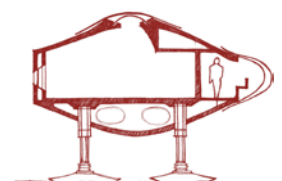
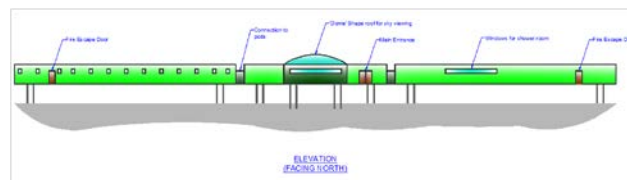
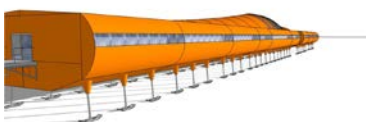
- Seven separate residential study weeks in Cambridge over two years
- Independent research under academic supervision in an area of your choice leading to a 15,000 word masters thesis in year two
- Life Membership of Wolfson College, Cambridge
- Extensive professional networking opportunities

For more information about the programme and for details on applying for a place please visit our website: www.idbe.arct.cam.ac.uk



'The IDBE masters course has led a pioneering role in our strong commitment to co-creation of learning with industry. It both benefits from and supports our close ties with business, and is an important part of an Engineering Department which is rated as one of the best in the world by graduate employers.'

Professor Robert Mair, Head of Civil and Environmental Engineering



The IDBE Masters Programme

The two-year Masters course is open to those involved in the commissioning, design, construction and management of projects in the built environment. Applications are welcome from those with a background in architecture, engineering, surveying, planning, landscape design, project management, building economics, urban design, contracting, as well as from client representatives, client advisors and facility management.

Course structure

The course is part-time. Students spend a total of seven residential weeks in Cambridge during the two years; four weeks in the first year and three in the second. The seven course weeks are structured around key concepts and themes which change and develop in response to new challenges faced by the construction sector. Each week comprises an intensive programme of:

- Formal lectures from leading practitioners and academics
- Workshops and seminars
- A studio design project undertaken in small interdisciplinary teams of students supported by design tutors. The themes and topics of the residential weeks vary from year to year.

2014 – 2016 Course Dates (provisional)

September 21st – 27th 2014
December 7th – 13th 2014

March 22nd – 28th 2015
June 14th – 20th 2015
December 6th – 12th 2015

April 3rd - 9th 2016
July 10th – 16th 2016

The compulsory residential study weeks in Cambridge run from Sunday evening to Saturday afternoon.

Fees

UK, EU and Overseas students are all charged the same fee which is £5,600 per annum. In addition at Cambridge all students are required to be members of a college. IDBE students are offered membership of Wolfson College, where the annual fee will be £1235 for students enrolling in 2014. College membership does not include the cost of accommodation or food, but as a member of Wolfson you will benefit from accommodation at a reduced rate.

Most students are expected to obtain full or partial funding from their employers. Where this is not possible, some small bursaries are available for a proportion of the tuition fee.

Entry Qualifications

Applicants should have at least a 2.i honours degree from a UK university or equivalent and a minimum of 3 years professional experience in the built environment since graduating. Those with alternative experience or qualifications should contact the IDBE office for advice.

Individual Assignments

Between the residential weeks, and away from Cambridge, students undertake four written assignments:

- A 5,000 word case study
- Two 3,000 word essays
- A 15,000 word thesis in the second year

Applications

Applications are open until July 2014, but there are a limited number of places available each year which are allocated to successful applicants on a rolling basis. Applications should be made via the Institute of Continuing Education: www.ice.cam.ac.uk/mst. In the first instance please email a copy of your CV to the IDBE office for advice on your suitability.



'Our flagship IDBE Masters course is the most successful and well-established part-time Masters course that addresses issues of interdisciplinary at the highest level. It offers a challenging and diverse menu of outstanding seminars and workshops, and delivers unique practice-led research opportunities for architects, engineering and other built environment professionals.'

Professor Koen Steemers, Head of Department of Architecture